

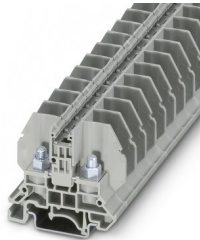
# RBO 5 - Bolt connection terminal block



3058059

<https://www.phoenixcontact.com/au/products/3058059>

Please be informed that the data shown in this PDF document is generated from our Online Catalog. Please find the complete data in the user documentation. Our General Terms of Use for Downloads are valid.



Feed-through terminal block with bolt connection method, cross section: 0.1 - 6 mm<sup>2</sup>, AWG: 26 - 10, width 13 mm, color: gray

## Your advantages

- Compact connection with ring and fork-type cable lugs
- Mounting on standard DIN rails
- Isolator bridge bar for switchable cross connections
- Bridge shaft for potential distribution using standard screw bridges

## Commercial Data

Item number	3058059
Packing unit	50 pc
Minimum order quantity	50 pc
Sales Key	BE4412
Product Key	BE4412
Catalog Page	Page 387 (C-1-2019)
GTIN	4046356500319
Weight per Piece (including packing)	20.12 g
Weight per Piece (excluding packing)	19.134 g
Customs tariff number	85369010
Country of origin	IN

# RBO 5 - Bolt connection terminal block



3058059

<https://www.phoenixcontact.com/au/products/3058059>

## Technical Data

### Product properties

Product type	Bolt connection terminal block
Pitch	13 mm
Number of connections	2
Number of rows	1
Potentials	1

### Insulation characteristics

Overvoltage category	III
Degree of pollution	3

### Electrical properties

Rated surge voltage	8 kV
Maximum power dissipation for nominal condition	1.82 W

### Connection data

Number of connections per level	2
Nominal cross section	10 mm <sup>2</sup>

#### 1 level

Stripping length	The stripping length depends on the specification provided by the cable lug manufacturer.
Connection in acc. with standard	IEC 60947-7-1
Nominal current	57 A
Maximum load current	57 A (with 10 mm <sup>2</sup> conductor cross section)
Nominal voltage	1000 V
Nominal cross section	10 mm <sup>2</sup>

#### Cable lug connection DIN 46234:1980-03

Connection in acc. with standard	DIN 46234:1980-03
Cross section	0.1 mm <sup>2</sup> ... 10 mm <sup>2</sup>
Cross section range AWG	26 ... 8 (converted acc. to IEC)
Hole diameter	5.3 mm
Width	10 mm
Bolt diameter	5 mm
Screw thread	M5
Tightening torque	2 ... 2.2 Nm

Connection in acc. with standard	DIN 46237:1970-07
Cross section	0.5 mm <sup>2</sup> ... 6 mm <sup>2</sup>
Cross section range AWG	20 ... 10 (converted acc. to IEC)
Hole diameter	5.3 mm
Width	10 mm
Bolt diameter	5 mm

# RBO 5 - Bolt connection terminal block



3058059

<https://www.phoenixcontact.com/au/products/3058059>

Tightening torque	2 ... 2.2 Nm
Identification color of ring cable lugs : red	1 mm <sup>2</sup>
Identification color of ring cable lugs : blue	2.5 mm <sup>2</sup>
Identification color of ring cable lugs : yellow	6 mm <sup>2</sup>

## Dimensions

Width	13 mm
End cover width	2.2 mm
Height	53.3 mm
Height NS 35/15	54.5 mm
Height NS 35/7,5	47 mm
Height NS 32	52 mm
Length	53.3 mm
Pitch	13 mm

## Material specifications

Color	gray
Flammability rating according to UL 94	V0
Insulating material group	I
Insulating material	PA
Static insulating material application in cold	-60 °C
Temperature index of insulation material (DIN EN 60216-1 (VDE 0304-21))	130 °C
Relative insulation material temperature index (Elec., UL 746 B)	130 °C
Fire protection for rail vehicles (DIN EN 45545-2) R22	HL 1 - HL 3
Fire protection for rail vehicles (DIN EN 45545-2) R23	HL 1 - HL 3
Fire protection for rail vehicles (DIN EN 45545-2) R24	HL 1 - HL 3
Fire protection for rail vehicles (DIN EN 45545-2) R26	HL 1 - HL 3
Calorimetric heat release NFPA 130 (ASTM E 1354)	28 MJ/kg
Surface flammability NFPA 130 (ASTM E 162)	passed
Specific optical density of smoke NFPA 130 (ASTM E 662)	passed
Smoke gas toxicity NFPA 130 (SMP 800C)	passed

## Electrical tests

### Surge voltage test

Test voltage setpoint	9.8 kV
Result	Test passed

### Temperature-rise test

Requirement temperature-rise test	Increase in temperature ≤ 45 K
Result	Test passed
Short-time withstand current 10 mm <sup>2</sup>	1.2 kA
Result	Test passed

### Power-frequency withstand voltage

# RBO 5 - Bolt connection terminal block



3058059

<https://www.phoenixcontact.com/au/products/3058059>

Test voltage setpoint	2 kV
Result	Test passed

## Mechanical properties

### Mechanical data

Open side panel	Yes
-----------------	-----

## Mechanical tests

### Mechanical strength

Result	Test passed
--------	-------------

### Attachment on the carrier

DIN rail/fixing support	NS 32/NS 35
Test force setpoint	5 N
Result	Test passed

## Environmental and real-life conditions

### Needle-flame test

Time of exposure	30 s
Result	Test passed

### Oscillation/broadband noise

Specification	DIN EN 50155 (VDE 0115-200):2008-03
Spectrum	Service life test category 1, class B, body mounted
Frequency	$f_1 = 5 \text{ Hz}$ to $f_2 = 150 \text{ Hz}$
ASD level	$1.857 \text{ (m/s}^2\text{)}^2\text{/Hz}$
Acceleration	0.8g
Test duration per axis	5 h
Test directions	X-, Y- and Z-axis
Result	Test passed

### Shocks

Specification	DIN EN 50155 (VDE 0115-200):2008-03
Pulse shape	Half-sine
Acceleration	5g
Shock duration	30 ms
Number of shocks per direction	3
Test directions	X-, Y- and Z-axis (pos. and neg.)
Result	Test passed

### Ambient conditions

Ambient temperature (operation)	-60 °C ... 105 °C (max. short-term operating temperature RTI Elec.)
Ambient temperature (storage/transport)	-25 °C ... 60 °C (for a short time, not exceeding 24 h, -60 °C to +70 °C)

# RBO 5 - Bolt connection terminal block



3058059

<https://www.phoenixcontact.com/au/products/3058059>

Ambient temperature (assembly)	-5 °C ... 70 °C
Ambient temperature (actuation)	-5 °C ... 70 °C
Permissible humidity (storage/transport)	30 % ... 70 %

## Standards and regulations

Connection in acc. with standard	IEC 60947-7-1
----------------------------------	---------------

## Mounting

Mounting type	NS 35/7,5
	NS 35/15

# RBO 5 - Bolt connection terminal block

3058059

<https://www.phoenixcontact.com/au/products/3058059>



## Drawings

Circuit diagram



# RBO 5 - Bolt connection terminal block





3058059


<https://www.phoenixcontact.com/au/products/3058059>

## Approvals

To download certificates, visit the product detail page: <https://www.phoenixcontact.com/au/products/3058059>

 <b>cUL Recognized</b> Approval ID: FILE E 60425				
	Nominal Voltage $U_N$	Nominal Current $I_N$	Cross Section AWG	Cross Section $\text{mm}^2$
Use group B	600 V	45 A	-	-
Use group C	600 V	45 A	-	-

 <b>UL Recognized</b> Approval ID: FILE E 60425				
	Nominal Voltage $U_N$	Nominal Current $I_N$	Cross Section AWG	Cross Section $\text{mm}^2$
Use group B	600 V	45 A	-	-
Use group C	600 V	45 A	-	-

 <b>EAC</b> Approval ID: RU C-DE.BL08.B.00540	
---	--

# RBO 5 - Bolt connection terminal block



3058059

<https://www.phoenixcontact.com/au/products/3058059>

## Classifications

### ECLASS

ECLASS-11.0	27141120
ECLASS-13.0	27250101

### ETIM

ETIM 8.0	EC000897
----------	----------

### UNSPSC

UNSPSC 21.0	39121400
-------------	----------



# RBO 5 - Bolt connection terminal block



3058059

<https://www.phoenixcontact.com/au/products/3058059>

## Environmental Product Compliance


China RoHS	Environmentally friendly use period: unlimited = EFUP-e
	No hazardous substances above threshold values

# RBO 5 - Bolt connection terminal block

3058059

<https://www.phoenixcontact.com/au/products/3058059>

## Accessories

 Note: Applying some accessories below might limit this product.


### FB 10-13 - Fixed bridge

3059126

<https://www.phoenixcontact.com/au/products/3059126>



Fixed bridge, pitch: 13 mm, number of positions: 10, color: silver

 Max. current carrying capacity: 57 A

with 41 A bridging between non-adjacent term. blocks

---


### FB 10-13 ISO - Fixed bridge

3059663

<https://www.phoenixcontact.com/au/products/3059663>



Fixed bridge, pitch: 13 mm, number of positions: 10, color: silver

 Max. current carrying capacity: 24 A

# RBO 5 - Bolt connection terminal block

3058059

<https://www.phoenixcontact.com/au/products/3058059>



## D-RSC 5 - End cover

3058020

<https://www.phoenixcontact.com/au/products/3058020>

End cover, length: 53.3 mm, width: 2.2 mm, height: 37 mm, color: gray



---

## TS-KK 3 - Separating plate

2770215

<https://www.phoenixcontact.com/au/products/2770215>

Separating plate, length: 14 mm, width: 0.5 mm, height: 16 mm, color: gray



# RBO 5 - Bolt connection terminal block

3058059

<https://www.phoenixcontact.com/au/products/3058059>

## NS 32 PERF 2000MM-VPE 10 - DIN rail perforated

1201002

<https://www.phoenixcontact.com/au/products/1201002>



DIN rail perforated, acc. to EN 60715, material: Steel, galvanized, passivated with a thick layer, G profile, color: silver, Pack of 10 (20 m)

---

## NS 32 UNPERF 2000MM-VPE 10 - DIN rail, unperforated

1201015

<https://www.phoenixcontact.com/au/products/1201015>



DIN rail, unperforated, acc. to EN 60715, material: Steel, galvanized, passivated with a thick layer, G profile, color: silver, Pack of 10 (20 m)

# RBO 5 - Bolt connection terminal block

3058059

<https://www.phoenixcontact.com/au/products/3058059>

## NS 35/ 7,5 PERF 2000MM - DIN rail perforated

0801733

<https://www.phoenixcontact.com/au/products/0801733>



DIN rail perforated, acc. to EN 60715, material: Steel, galvanized, passivated with a thick layer, Standard profile, color: silver, Pack of 25 (50 m)

---

## NS 35/ 7,5 UNPERF 2000MM - DIN rail, unperforated

0801681

<https://www.phoenixcontact.com/au/products/0801681>



DIN rail, unperforated, acc. to EN 60715, material: Steel, galvanized, passivated with a thick layer, Standard profile, color: silver, Pack of 25 (50 m)

# RBO 5 - Bolt connection terminal block

3058059

<https://www.phoenixcontact.com/au/products/3058059>

## NS 35/ 7,5 WH PERF 2000MM - DIN rail perforated

1204119

<https://www.phoenixcontact.com/au/products/1204119>



DIN rail perforated, acc. to EN 60715, material: Steel, Galvanized, white passivated, Standard profile, color: silver, Pack of 25 (50 m)

---

## NS 35/ 7,5 WH UNPERF 2000MM-VPE 10 - DIN rail, unperforated

1204122

<https://www.phoenixcontact.com/au/products/1204122>



DIN rail, unperforated, acc. to EN 60715, material: Steel, Galvanized, white passivated, Standard profile, color: silver, Pack of 10 (20 m)

# RBO 5 - Bolt connection terminal block

3058059

<https://www.phoenixcontact.com/au/products/3058059>

## NS 35/ 7,5 AL UNPERF 2000MM - DIN rail, unperforated

0801704

<https://www.phoenixcontact.com/au/products/0801704>



DIN rail, unperforated, acc. to EN 60715, material: Aluminum, uncoated, Standard profile, color: silver, Pack of 25 (50 m)

---

## NS 35/ 7,5 ZN PERF 2000MM - DIN rail perforated

1206421

<https://www.phoenixcontact.com/au/products/1206421>



DIN rail perforated, acc. to EN 60715, material: Steel, galvanized, Standard profile, color: silver, Pack of 25 (50 m)

# RBO 5 - Bolt connection terminal block

3058059

<https://www.phoenixcontact.com/au/products/3058059>

## NS 35/ 7,5 ZN UNPERF 2000MM - DIN rail, unperforated

1206434

<https://www.phoenixcontact.com/au/products/1206434>



DIN rail, unperforated, acc. to EN 60715, material: Steel, galvanized, Standard profile, color: silver, Pack of 25 (50 m)

---

## NS 35/ 7,5 CU UNPERF 2000MM-VPE 10 - DIN rail, unperforated

0801762

<https://www.phoenixcontact.com/au/products/0801762>



DIN rail, unperforated, acc. to EN 60715, material: Copper, uncoated, Standard profile, color: copper-colored, Pack of 10 (20 m)



# RBO 5 - Bolt connection terminal block

3058059

<https://www.phoenixcontact.com/au/products/3058059>



## NS 35/ 7,5 CAP - End cap

1206560

<https://www.phoenixcontact.com/au/products/1206560>

DIN rail end piece, for DIN rail NS 35/7.5



---

## NS 35/15 PERF 2000MM - DIN rail perforated

1201730

<https://www.phoenixcontact.com/au/products/1201730>



DIN rail perforated, similar to EN 60715, material: Steel, galvanized, passivated with a thick layer, Standard profile, color: silver, Pack of 25 (50 m)

# RBO 5 - Bolt connection terminal block



3058059

<https://www.phoenixcontact.com/au/products/3058059>

## NS 35/15 UNPERF 2000MM - DIN rail, unperforated

1201714

<https://www.phoenixcontact.com/au/products/1201714>



DIN rail, unperforated, similar to EN 60715, material: Steel, galvanized, passivated with a thick layer, Standard profile, color: silver, Pack of 25 (50 m)

---

## NS 35/15 WH PERF 2000MM - DIN rail perforated

0806602

<https://www.phoenixcontact.com/au/products/0806602>



DIN rail perforated, similar to EN 60715, material: Steel, Galvanized, white passivated, Standard profile, color: white, Pack of 25 (50 m)

# RBO 5 - Bolt connection terminal block

3058059

<https://www.phoenixcontact.com/au/products/3058059>

## NS 35/15 WH UNPERF 2000MM-VPE 10 - DIN rail, unperforated

1204135

<https://www.phoenixcontact.com/au/products/1204135>



DIN rail, unperforated, similar to EN 60715, material: Steel, Galvanized, white passivated, Standard profile, color: silver, Pack of 10 (20 m)

---

## NS 35/15 AL UNPERF 2000MM - DIN rail, unperforated

1201756

<https://www.phoenixcontact.com/au/products/1201756>



DIN rail, unperforated, similar to EN 60715, material: Aluminum, uncoated, Standard profile, color: silver

# RBO 5 - Bolt connection terminal block

3058059

<https://www.phoenixcontact.com/au/products/3058059>

## NS 35/15 ZN PERF 2000MM - DIN rail perforated

1206599

<https://www.phoenixcontact.com/au/products/1206599>



DIN rail perforated, similar to EN 60715, material: Steel, galvanized, Standard profile, color: silver, Pack of 25 (50 m)

---

## NS 35/15 ZN UNPERF 2000MM - DIN rail, unperforated

1206586

<https://www.phoenixcontact.com/au/products/1206586>



DIN rail, unperforated, similar to EN 60715, material: Steel, galvanized, Standard profile, color: silver, Pack of 25 (50 m)

# RBO 5 - Bolt connection terminal block

3058059

<https://www.phoenixcontact.com/au/products/3058059>

## NS 35/15 CU UNPERF 2000MM-VPE 10 - DIN rail, unperforated

1201895

<https://www.phoenixcontact.com/au/products/1201895>



DIN rail, unperforated, similar to EN 60715, material: Copper, uncoated, Standard profile, color: copper-colored, Pack of 10 (20 m)

---

## NS 35/15 CAP - End cap

1206573

<https://www.phoenixcontact.com/au/products/1206573>

DIN rail end piece, for DIN rail NS 35/15



# RBO 5 - Bolt connection terminal block

3058059

<https://www.phoenixcontact.com/au/products/3058059>



## NS 35/15-2,3 UNPERF 2000MM-VPE 10 - DIN rail, unperforated

1201798

<https://www.phoenixcontact.com/au/products/1201798>



DIN rail, unperforated, acc. to EN 60715, material: Steel, galvanized, passivated with a thick layer, Standard profile 2.3 mm, color: silver, Pack of 10 (20 m)

---

## ZB 13:UNBEDRUCKT - Zack marker strip

0829131

<https://www.phoenixcontact.com/au/products/0829131>



Zack marker strip, Strip, white, unlabeled, can be labeled with: PLOTMARK, CMS-P1-PLOTTER, mounting type: snapped, for terminal block width: 13 mm, lettering field size: 13 x 10.5 mm, Number of individual labels: 5

## RBO 5 - Bolt connection terminal block

3058059

<https://www.phoenixcontact.com/au/products/3058059>



### ZB 13 CUS - Zack marker strip

0829132

<https://www.phoenixcontact.com/au/products/0829132>



Zack marker strip, can be ordered: Strip, white, labeled according to customer specifications, mounting type: snap into tall marker groove, for terminal block width: 13 mm, lettering field size: 13 x 10.5 mm, Number of individual labels: 5

---

### ZBF 13:UNBEDRUCKT - Zack Marker strip, flat

0829133

<https://www.phoenixcontact.com/au/products/0829133>



Zack Marker strip, flat, Strip, white, unlabeled, can be labeled with: PLOTMARK, CMS-P1-PLOTTER, mounting type: snapped, for terminal block width: 13 mm, lettering field size: 13 x 5.2 mm, Number of individual labels: 5

# RBO 5 - Bolt connection terminal block

3058059

<https://www.phoenixcontact.com/au/products/3058059>



## ZBF 13 CUS - Zack Marker strip, flat

0829134

<https://www.phoenixcontact.com/au/products/0829134>



Zack Marker strip, flat, can be ordered: Strip, white, labeled according to customer specifications, mounting type: snap into flat marker groove, for terminal block width: 13 mm, lettering field size: 13 x 5.2 mm, Number of individual labels: 5

---

## CLIPFIX 35 - End clamp

3022218

<https://www.phoenixcontact.com/au/products/3022218>



Quick mounting end clamp for NS 35/7,5 DIN rail or NS 35/15 DIN rail, with marking option, width: 9.5 mm, color: gray



# RBO 5 - Bolt connection terminal block

3058059

<https://www.phoenixcontact.com/au/products/3058059>



## CLIPFIX 35-5 - End clamp

3022276

<https://www.phoenixcontact.com/au/products/3022276>



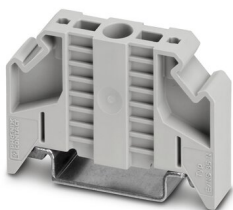
Quick mounting end clamp for NS 35/7,5 DIN rail or NS 35/15 DIN rail, with marking option, with parking option for FBS...5, FBS...6, KSS 5, KSS 6, width: 5.15 mm, color: gray

---

## E/NS 35 N - End clamp

0800886

<https://www.phoenixcontact.com/au/products/0800886>



End clamp, width: 9.5 mm, color: gray

# RBO 5 - Bolt connection terminal block



3058059

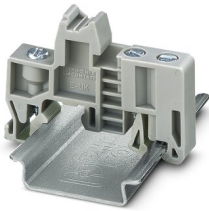
<https://www.phoenixcontact.com/au/products/3058059>

## E/UK - End clamp

1201442

<https://www.phoenixcontact.com/au/products/1201442>

End clamp, material: PA, color: gray, Mounting on a DIN rail NS 32 or NS 35



---

## E/UK 1 - End clamp

1201413

<https://www.phoenixcontact.com/au/products/1201413>

End clamps, for supporting the ends of double-level and three-level terminal blocks, width: 10 mm, color: gray



---

Phoenix Contact 2023 © - all rights reserved  
<https://www.phoenixcontact.com>

PHOENIX CONTACT PTY Ltd  
Unit 7, 2-8 South Street  
Rydalmere NSW 2116  
1300 786 411  
[customerservice@phoenixcontact.com.au](mailto:customerservice@phoenixcontact.com.au)